

## Clearswift SpamLogic™ Anti-spam

### Anti-spam, simplified.

#### Spam is the enemy

We all hate spam. But that doesn't mean it's going to disappear. In fact, some analysts predict that spam might account for as much as 90% of all email traffic over the next few years.

While we can't make spam go away, we can keep it out of your company and minimize the hassle of spam-fighting with SpamLogic solution from Clearswift.

#### SpamLogic is the solution

As the market leader in content filtering, fighting spam has always been an important part of our solution set. So we called in John Graham-Cumming, one of the world's leading experts in fighting spam to help us develop a revolutionary remedy. The result is SpamLogic, the most accurate and easy-to-deploy solution on the market. SpamLogic screens all email based on source, content and destination as well as all attachments and executables. SpamLogic uses a whole battery of defenses, orchestrated in a completely new way to deliver the best accuracy rates you can get - up to 99%. The defenses include:

##### Bayesian Analysis

A statistical inference in which probabilities are interpreted not as frequencies but as degrees of belief. Our Bayesian algorithms are tuned for the probability profiles that best reflect spam determination and have been honed through experience with over 20 million users worldwide - and through John Graham-Cumming's experience on the front line of the spam wars.

##### Textual Analysis

Knowing the terms spammers use and the tricks they use to mask them (like "V1agra").

##### Auto-whitelisting

One company's spam is another company's business mail. SpamLogic watches your traffic, determines who are the good guys and lets them send you mail.

##### Real-time blacklisting

With continuous feeds from the SURBL database to check the domain names of URLs within the body of a message against a list of domains currently known to be mentioned within spam emails. If a match is found, the message is considered to be spam. In addition a specified RBL server or servers can be checked to compare the connecting IP address. If one or more RBL servers recognize the IP address the email message is also considered to be spam.

##### 'Tar Pitting'\*

When SpamLogic detects too many messages from the same host to non-existent addresses, it assumes a directory harvest attack is in progress and slows down all the mail from that host's address.

##### Sender Policy Framework & Sender ID\*

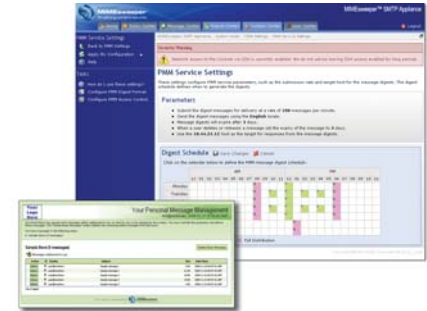
Two industry initiatives that put the burden of authenticity on the sender (spammers hate that).  
\* Currently only available on MIMEsweeper SMTP Appliance.

##### Personal Message Manager

SpamLogic takes the burden of quarantine administration from the shoulders of the IT staff. With Personal Message Manager, delete / release decisions are made quickly and easily by the people best equipped to make them: the user.

#### Fighting spam was never so easy

Spam will always be with us. SpamLogic is designed to make spam defense as simple as possible without sacrificing accuracy. The development team spent months on simplicity and ease-of-use features alone, making the solution easy to deploy, manage, maintain and update.



**Personal Message Manager.** Managing your spam and quarantine lists has never been so easy.

#### NEW for the SMTP appliance:

SpamLogic is now enhanced with a second layer of signatures hand-crafted by specialists to identify the styles of specific spammers. These signature 'bullets' are highly tuned to spot even 'zero day' spam before it hits your gateway.

*"Within a week our exchange logs have dropped to 50% of their previous size. For us this means reduced mail storage costs and reduced backup times. We thought we had a good system in place before, but MIMEsweeper... stunning, simply stunning."*

**Ross Smith, Network Manager, Robinson Construction**

#### Product Highlights:

- Block spam at the gateway
- 99% accuracy rate
- Self-training
- Low memory footprint
- Personal Message Manager lets users manage quarantines.
- Available in both software and appliance platforms
- New hand-crafted signature 'bullets' spot major spammers' styles
- New Sliding Scale detection lets you set the sensitivity level

#### Endorsements:

*"The new SpamLogic technology from Clearswift is excellent and in my experience it has a detection rate of 99.8%."*  
— **Matthew Thompson, Lloyd's Register Fairplay**

*"The Clearswift team is dedicated to stamping out spam. Together, I think we've created something special - an anti-spam tool that blocks the junk and lets the real business mail through, with a minimum of fuss. I'm proud of it."*  
— **John Graham-Cumming, co-creator of SpamLogic**

*"In just two days the difference from our previous solution was astonishing, I saw a 97% reduction in the amount of spam getting through to my inbox. PMM itself is simple to install, easy to use and even better to manage."*  
— **Ross Smith, Network Manager, Robinson Construction**

# Clearswift SpamLogic™ Anti-spam

## It's all about accuracy

SpamLogic is more than the sum of its defenses. It's a highly-tuned system based on thousands of hours of testing on real world mail traffic in dozens of large companies.

And with sliding scale detection, you can choose from six pre-defined levels of sensitivity to strike the perfect balance between detection and false positive rates.

Custom Control lets administrators see which spam technology caught any given offender. This allows you to continually tune your settings for maximum accuracy.

Our 99% accuracy rate is the highest a spam solution will ever go - a combination of detection rates and 'false positive' levels that gives a true indication of the power of the tool.

## Two deployment options

SpamLogic is available with our MIMEsweeper for SMTP software - versions 4.3, 5.0, 5.1 and 5.2 - and our MIMEsweeper SMTP Appliance.

## How to buy

Clearswift sells through an extensive partner network of qualified security specialists, trained on the MIMEsweeper solutions. Visit the Clearswift website at [www.clearswift.com/findpartner](http://www.clearswift.com/findpartner) to find your nearest Clearswift partners, or contact us directly at the numbers below.



*The System Center Home Screen: a clear, user-friendly interface for administrators, managers and policy owners.*

## About John Graham-Cumming

John Graham-Cumming, one of the world's true gurus in spam-fighting, worked alongside our development team in creating SpamLogic. After receiving a PhD in computer security from Oxford University, John worked for a variety of computer hardware and software companies writing everything from device drivers to desktop software. In 2002, he created the award-winning POPFile, the popular open source email classification and anti-spam software, which InternetWeek has described as having "the truly revolutionary feel of the first web browsers and instant message clients". John has published several papers on the mathematical foundation of secure computer systems and presents at many industry conferences.

## About Clearswift

Clearswift simplifies content security. Our products help organizations enforce best-practice email and web use, ensuring all traffic complies with internal policy and external regulations. Our range of content filtering solutions makes it easy to deploy, manage and maintain no-compromise email and web security for both inbound and outbound traffic.

Clearswift is the only vendor to offer comprehensive, policy-based content security in all three deployment methods: as software, as an appliance and as a managed service. All three platforms are designed to take the hassle out of securing internet traffic, with a clear, intuitive management interface; automatic, 'zero-touch' updates; powerful reporting and common-sense policy management.

Twenty years of experience across 15,000 organizations has helped us raise security standards while simplifying security management at the same time. We've helped many of the world's most successful organizations use the internet with confidence and are committed to staying ahead of the market and helping our customers defend against all emerging threats.

## Contact Clearswift

**United States**  
 100 Marine Parkway, Suite 550  
 Redwood City, CA 94065  
 Tel: +1 800 982 6109 | Fax: +1 888-888-6884

**United Kingdom**  
 1310 Waterside, Arlington Business Park, Theale,  
 Reading, Berkshire, RG7 4SA  
 Tel: +44 (0) 11 8903 8903 | Fax: +44 (0) 11 8903 9000

**Germany**  
 Amsinckstrasse 67, 20097 Hamburg  
 Tel: +49 40 23 999 0 | Fax: +49 40 23 999 100

**Australia**  
 Ground Floor, 165 Walker Street, North Sydney,  
 New South Wales, 2060  
 Tel: +61 2 9424 1200 | Fax: +61 2 9424 1201

**Japan**  
 Hanai Bldg. 7F, 1-2-9, Shiba Kouen Minato-ku  
 Tokyo 105-0011  
 Tel: +81 (3) 5777 2248 | Fax: +81 (3) 5777 2249

MIMEsweeper™ SMTP Appliance

MIMEsweeper™ for SMTP

MIMEsweeper™ for Web  
 URL Filter

MIMEsweeper™ for Exchange

MIMEsweeper™ for Domino

e-Sweeper™

IMAGEmanager™